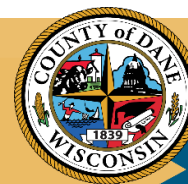


Dane County EMS Newsletter

October, 2021



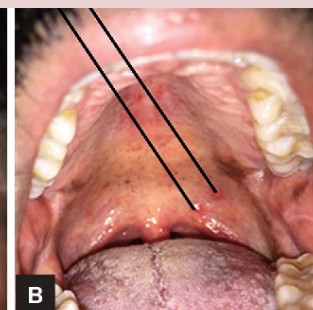
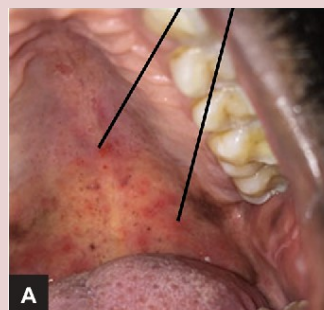
DCEMS Resuscitation Academy

Immediate high-quality CPR and defibrillation are the most essential aspects of providing a patient with the best chance of surviving cardiac arrest. On November 2nd, Dane County EMS will be hosting its second Resuscitation Academy for providers to hone these lifesaving skills. Two separate training sessions will be available at the Alliant Energy Center, one from 9am-12pm and the other from 5pm-8pm. The sessions are limited to 25 people each, so ask your chief or training director soon to sign you up!



October Viz Quiz

- You are dispatched to a daycare for a 15 month old female with a seizure. Father arrived on scene at the same time you did
- Per daycare and father, patient was in usual state of health yesterday. Per father, patient was a little fussier this morning than usual, otherwise was acting normal. Per daycare was drinking fluids, though seemed to have less of an appetite. Per father, patient didn't really want to eat yesterday and noticed some canker sores developing (pictured below). Daycare also noted the patient felt warm today.
- Patient was witnessed to have what was described as "full body shaking" associated with eyes rolled up into the back of her head and a loss of consciousness for a full minutes before 911 was called. Denied changes in color. Per father, no history or family history of seizures. Patient has never had a similar episode.
- On assessment patient is warm to the touch, sleepy though easily aroused. Moves all 4x extremities spontaneously. Temperature of 103.1 otherwise vitals are unremarkable.
- On exam you notice the following rash to the feet and hands
- Patients cries and shows you their mouth
- What do you believe is the etiology of this patient's illness?
- A. viral
- B. bacterial
- C. fungal
- D. parasite



Submit your answers at <https://www.surveymonkey.com/r/MQM59T6> for the chance to win a prize!

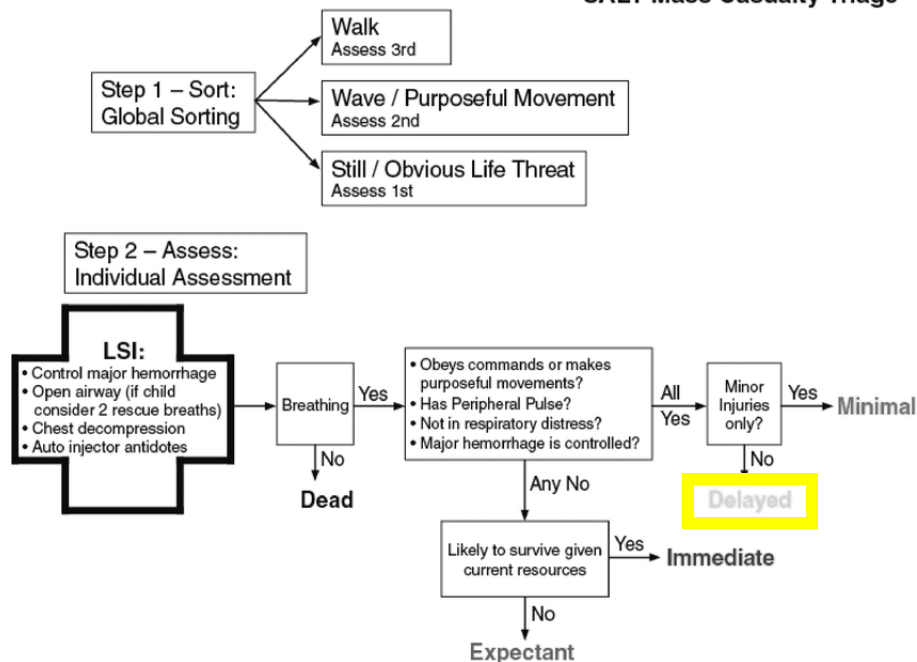
September Follow-Up

Answer: **Yellow**

Reference the SALT Mass Casualty Triage algorithm to the right for how to triage patients in a mass casualty incident.

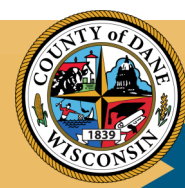
Congrats to a member from Madison Fire for winning the September Viz Quiz!

SALT Mass Casualty Triage



Dane County EMS Newsletter

October, 2021



Exceptional Cases of CPR Performance

◇ The first stand out high-performance CPR case takes place with Mount Horeb Rescue 40 (Kayla Conrad, Cameron Treamer, and Jamison Brinkmann) and Fitch-Rona Medic 46 (Jamie Ennis & Jeremy Owen) caring for a patient in cardiac arrest. With the help of MHPD and the fire crew, these crews worked together to provide high-performance CPR and ACLS resuscitation. The R40 crew made excellent use of the LifePak 15's internal metronome to keep the 1,714 manual compressions they performed within the goal rate. This incident was an outstanding example of multiple responders working together to provide a smooth and effective resuscitation. Great work to all involved! Highlights of this case to note for those involved include:

- A chest compression fraction of 93%
- Zero pauses lasting longer than 10 seconds
- Excellent rate control
- Post-ROSC EKG acquisition
- Monitor charged prior to every rhythm check



◇ A second recent stand out case comes from the City of Madison Fire Department. The crew of Medic 7 (Jeffrey Ezzell & Christopher Hubert) and Engine 7 (David Bridges, Oscar Castillo, George Nickolas, & Wade Raddatz) demonstrated their ability to execute a high-performance CPR resuscitation with the following highlights:

- A chest compression fraction of 98%
- Zero pauses lasting longer than 10 seconds
- Excellent rate and depth control
- Monitor charged prior to every rhythm check



There have been 230 cardiac arrest summaries sent to crews for 2021 incidents. Even if a case you were involved in was not featured in this newsletter, know that the work you do does not go unnoticed! Thank you to all first responders in and around Dane County for your hard work and dedication to providing excellent cardiac arrest care to victims of cardiac arrest. Do you have a high-performance CPR case you would like to see covered in a future newsletter? Email anderson.eric@countyofdane.com with your submissions.

Protocol Quiz

Want to test your Dane County EMS Protocol knowledge? The newsletter will feature a different topic each month for members to test their familiarity with protocols. This month's topic is Cardiac Arrests. Take the quiz [here!](#) For more information on this topic or for correct answers, reach out to our office or your agency's training director.

[Sign up for Dane County Emergency Notifications](#)

HPCPR – Case Vignette of the Month

Case Study: You are paged to a 9-E3 Cardiac/Hanging. CAD notes indicate the patient is a 38F that was found in her bedroom, hanging from closet, husband cut her down and began CPR per telecommunicator recommendations. He last saw her that morning before leaving for work, then when he got home from work this evening, found her like this. Inside, you find a female on the bedroom floor receiving compressions by LEO who arrived prior to you. AED connected, no shocks delivered. You confirm patient is not responding and has no palpable pulse.

- How does presumed hanging mechanism impact your management?
- Do you treat this as a traumatic or medical arrest?
- What are your priorities in caring for this patient?

Upcoming Events and Training

10/12, 8am-5pm - UW Health Suicide Prevention and Resiliency

Register at uwhealth.org/first-responder-resiliency

10/19, & 10/20 - 7am-5:30pm UW Health Procedural Cadaver Lab

Register at: [10/19](#) or [10/20](#)

10/21, 6:30pm - SSM Health Monthly Training - Atypical Chest Pain

Register at <http://bit.ly/ssmemstraining>

11/2, 9am-12pm or 5pm-8pm - Resuscitation Academy

Register through your Director or Training Director

11/17, 9am-12pm or 1pm-5pm - Active Shooter Incident Management (ASIM) Basic

Register by emailing Longley@danesheriff.com

If issues are encountered with hyperlinks, copy and paste URL into browser.

Thank you for reading! For questions, comments, or feedback you can contact the DCEMS office at dcems@countyofdane.com or by calling 335-8228. All other staff contact information can be found at em.countyofdane.com/EMS/contactus.